

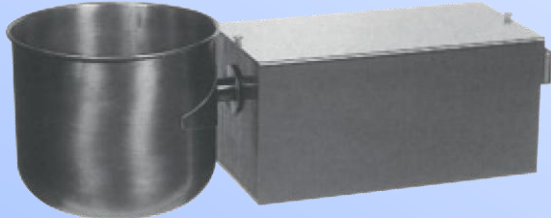
Scales and dosing units

ED90 Revolving hopper scale



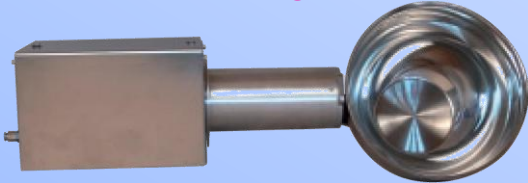
- ▶ Weighing range 3/5/7/10 kg, accuracy ± 1 g
- ▶ Stainless steel bin 10 l available
- ▶ Pneumatic drive with patented de-coupling system and control of the final position
- ▶ Optional: Automatic check weights 1+2 kg, ATEX-Version and rubber bins available

ED91 Revolving hopper scale



- ▶ Weighing range up to 25 kg, accuracy ± 2 g
- ▶ Stainless steel bin 16/20/25/32 l available
- ▶ Pneumatic drive with patented de-coupling system and control of the final position
- ▶ Optional: Automatic check weights 4+6 kg, ATEX-Version and rubber bins available

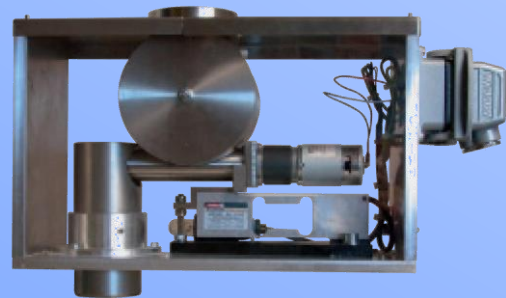
ED21 Revolving hopper scale



- ▶ Weighing range 0.5 up to 25 kg
- ▶ Accuracy ± 0.1 up to 2 g, depending on full scale range
- ▶ Stainless steel bin 0.2 up to 32 l available
- ▶ Pneumatic drive and control of the final position
- ▶ Optional: ATEX-Version and version for automatic bulk density measurement

Loss-in weight feeder scales for small components

EAD-21/0.7 and EAD-21/3.0



- ▶ Stainless steel bin 0.7 and 3 l available
- ▶ Weighing range max. 1 or 3 kg
- ▶ Accuracy ± 0.1 or 0.5 g / charge
- ▶ Capacity 0.03 up to 0.5 / 1.0 l/min.
- ▶ Integrated stirrer unit and heater
- ▶ Optional: Automatic check weights 1 kg and flap closure

Loss-in weight feeder scales for batch plants

EAD-B10 and EAD-B25



- ▶ EAD-B10: 10 l Stainless steel bin or painted
- ▶ EAD-B25: 25 l Stainless steel bin or painted
- ▶ Capacity up to 100 kg (with bin extension)
- ▶ Accuracy e.g. ± 3 g / charge, depending on material and screw diameter
- ▶ Dosing capacity screw \varnothing 30 mm up to 1 l/min, \varnothing 50 mm up to 5 l/min. \varnothing 80 mm up to 25 l/min.
- ▶ EAD-B10 with integrated stirrer (belt drive)
- ▶ Optional: Stirrer for EAD-B25, automatic check weights 1 kg, flap closure and bin extension

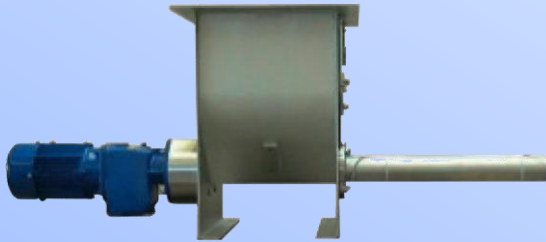
Screw dosing device

DSR-10



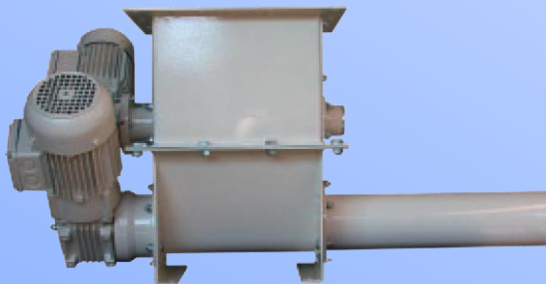
- ▶ 10 l Stainless steel bin or painted
- ▶ Dosing capacity screw Ø 30 mm up to 0.9 l/min.
Ø 50 mm up to 5 l/min.
- ▶ Conveyor length up to 4500 mm, depending on customer preference
- ▶ integrated stirrer (belt drive)
- ▶ Accuracy e.g. ± 3 g / charge, depending on material and screw diameter
- ▶ Optional: Flap closure and bin extension

DSR-25



- ▶ 25 l Stainless steel bin or painted
- ▶ Dosing capacity screw Ø 30 mm up to 0.9 l/min.
Ø 50 mm up to 5 l/min., Ø 80 mm up to 25 l/min
- ▶ Conveyor length up to 5000 mm, depending on customer preference
- ▶ M30 socket for level indicators
- ▶ Three-phase motor with gearbox
- ▶ Optional: Stirrer, flap closure and bin extension

DS21-100



- ▶ Dosing capacity screw Ø 100 mm up to 50 l/min.
- ▶ Conveyor length up to 5000 mm, depending on customer preference
- ▶ Flange 400x400 mm (300x300 inside), 9 l volume
- ▶ Three-phase motor with gearbox
- ▶ Optional: Stirrer, flap closure and bin extension

DSD21 Dosing device, screw-in-screw technology



- ▶ Dosing capacity coarse screw Ø 100 mm up to 50 l/min, fines screw Ø 35 mm up to 0.05 l/min.
- ▶ Only one motor for both screws required (only one frequency converter necessary)
- ▶ Dosing capacity with FC adjustable 1:220
- ▶ Advantage: rapid and accurate dosage
- ▶ Conveyor length up to 5000 mm, depending on customer preference
- ▶ Design and options are identical to DS21-100

Accessoires and plant engineering

- ▶ Dust housing for scales
- ▶ Flap closure DS-KLV, DS-KLG, DS-ASG
- ▶ Pneumatic cleaning beater DS-RK for emptying of the weighing bin of ED90/91



Example: 3-component dosing station with bag emptying and revolving hopper scale

SCHEURICH
GmbH

Grimmenstein 9/1
D - 88364 Wolfegg

Telefon: +49 (0)7527 9604-0

Telefax: +49 (0)7527 9604-32

E-Mail: info@scheurich-gmbh.de

Internet: www.scheurich-gmbh.de