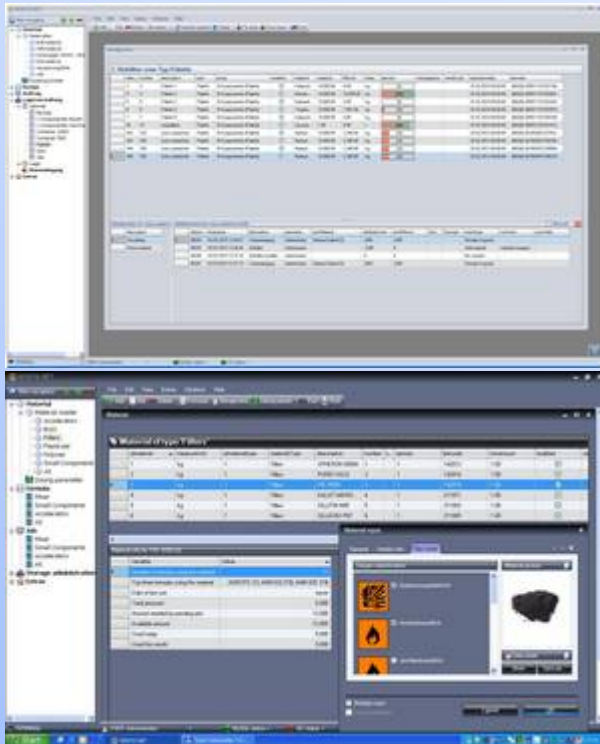


PROCESS CONTROL SYSTEM SENTIS.NET

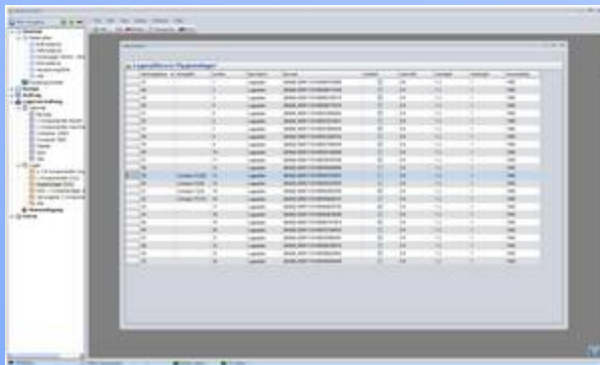


SENTIS.NET Intake / Warehouse



- ▶ Free entry of material type, test date and expiration date
- ▶ Free container type selection as pallets, drums e.g.
- ▶ Entering ID, unit, material type, barcode and material image
- ▶ Storage of data sheets and instructions
- ▶ Input of minimum amounts, releases, test status and operator
- ▶ Complete material and container statistics
- ▶ Synchronization with databases, ERP systems
- ▶ Recording of material movements
- ▶ Automatic material discharge also in manual mode
- ▶ Automated material ordering via e-mail or SMS

SENTIS.NET Storage Administration / Material Administration



- ▶ Free entry of material type, test date and expiration date
- ▶ Free exchange of containers e.g. for unitary packages
- ▶ Advice of stock locations and status e.g. blocked, checked, actual stock
- ▶ Free storage of auxiliary materials e.g. empty containers and packaging materials
- ▶ Material transfer, back posting and charge off
- ▶ First-in, first-out function
- ▶ Wireless information in the production factory
- ▶ Container status and stock location status
- ▶ Batch related stock management and generation of a unique ID for containers, intermediate products, e.g.
- ▶ Stock tracking and traceability of materials, intermediate products, containers, batches and finished products



PDA-WLAN
Operator guidance
Material management



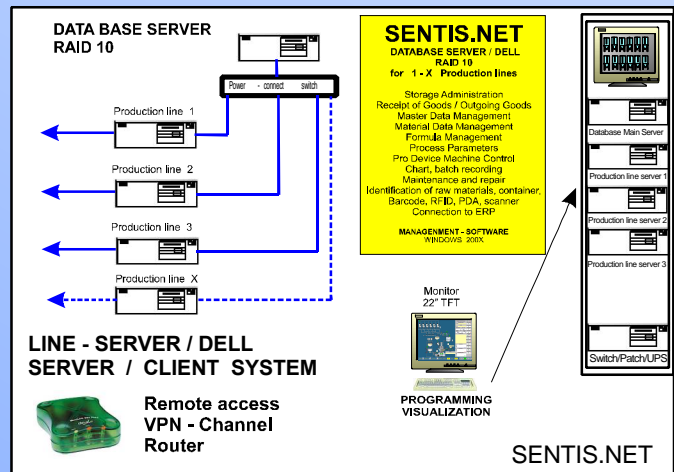
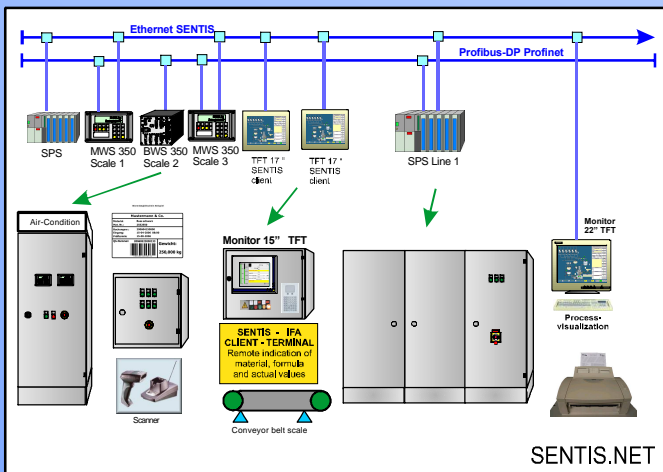
PDA-WLAN
Stock location info
Container histogram
Product histogram

SENTIS.NET Formula and Job Administration



- ▶ Formula and parameter input for weighing systems, mixers, machine parameters, reactors
- ▶ One-time input of metering parameters with dynamic adjustment of delay values
- ▶ Selection of free physical properties
- ▶ Production line independent product and master formulas
- ▶ Unique version number
- ▶ Color-coding for production progress of online / offline jobs
- ▶ SENTIS-JOB order planning
- ▶ Free programming of machining sequences
- ▶ SENTIS-DEVICE for mixers, extruders, machine-tools, e.g.
- ▶ Free assignment dosing equipment, silos (container) and scales
- ▶ Multi-user configuration for groups and terminals
- ▶ Record of trending, statistics, machine parameters, users, e.g.
- ▶ Graphical chart evaluation, order and batch diagram comparison for product optimization
- ▶ Maintenance lists, maintenance instructions and extensive alarm message history logging

SENTIS.NET Data Management, System Configuration



- ▶ SERVER / CLIENT Architecture
- ▶ Redundant data base e.g. MySQL Raid 5 und Raid 10
- ▶ Use of line server
- ▶ Connection to different SPS like S7, Allen-Bradley, Mitsubishi, Omron e.g.

- ▶ Operation and user management via VPN possible
- ▶ Access to scanner, PDA and printer via WLAN or Ethernet
- ▶ System to control multiple lines
- ▶ Maintenance via VPN
- ▶ Thin client, fan less, without any rotating disks
- ▶ Connection to ERP systems such as NAVISION, AS400, Blending, SAP