

Revolving Hopper Scale ED-21



Features

- Optimal tare/net ratio by new lightweight construction technology with turning load cell sensor.
- High weighing accuracy through creating a complete, self-contained weighing system free of external disturbing influences, e.g. pneumatic and electric connections.
- Almost wear-less turning mechanics.
- Load cell measuring sensor.
- Use of specific hopper shapes for given application.
- Various materials are used for the hoppers, but preferably stainless steel.
- Rapid hopper changing.
- Exceptionally robust construction for unfailing reliability, even under the harsh operating conditions.
- No ambient air and aspiration problems.

Application

- Wherever precise weighing of powdered, granular and liquid materials is required, also under harsh operating conditions.
- Batch weighing in conjunction with variable feeding elements, for dosage bulk material by coarse/fine flow or ramp control with single and multi-component systems.
- Weighing range ED-21S max. 1,5 kg / 1,6 l
- Weighing range ED-21M max. 12 kg / 10 l
- Weighing range ED-21L max. 25 kg / 32 l
- Automatic bulk density measurement system.
- Scale for screen output measurement.
- Check weigher for drop out parts (extrusion).

Functional principle

- An initiator indicates to the connected controller the basic hopper position.
- Bulk material feeding or one or more components is continued until the required target weight for the given batch size is reached.
- The hopper is emptied by turning it by 180°; an initiator informs the controller that the emptying position has been reached.
- The revolving hopper is returned to its basic position.

Standard equipment

- Revolving hopper made of stainless steel in different sizes and useful volumes.
- Load cell sensor according to the weighing range of the different types:
S = small, M = medium, L = large
- Overload protection of the load cell sensor.
- Initiators monitoring the hopper positions.
- Pneumatic revolving motion drive, controlled by 5/2-way solenoid valve with exhaust-air throttle.
- Plastic coated steel case with detachable covering hood; fastening screw thread in the base plate.

Accessories

- Dust case and design according to the buyer's specifications.

Technical data

- Air supply 5 to 6 bar.
- Supply voltage for the solenoid valve coil and the initiators 24 V_{DC}.
- Service life of the revolving drive.
- Resolution and linearity between ±0.2 – 2g, depending upon the max. final weight.
- Permissible ambient temperatures 0°C to +50°C.

Standards and norms

- According to conformity explanation the valid European standards.
- EC- declaration
- Devices in ATEX execution on request.

Revolving Hopper Scale ED-21

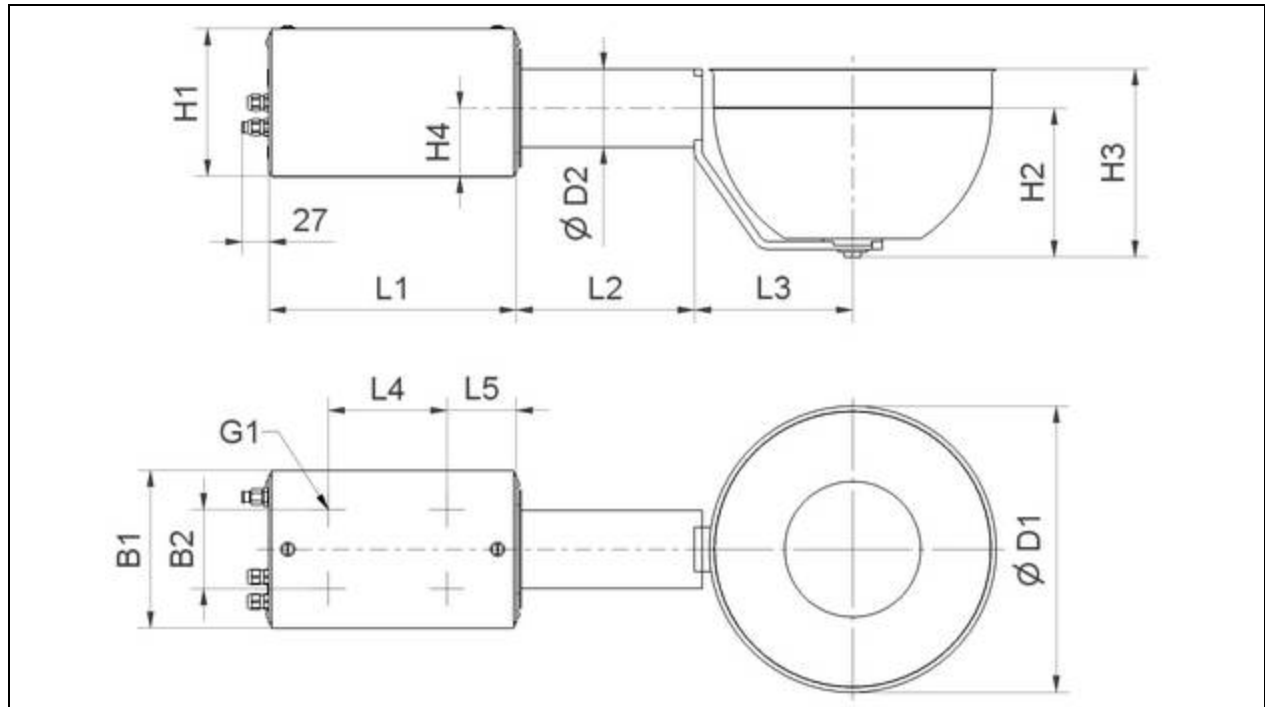


Dimensions of the standard equipment

Dimensions Revolving Hopper Scale type ED-21

Please refer the table below for the actual dimensions of the identifying letters.

Unit of measurement: mm.



Type	B1	B2	D2	G1	H1	H4	L1	L2	L4	L5
ED-21 S	140	60	53	M6	130	58,5	220	100	100	55
ED-21 M	160	80	79	M8	150	69,5	250	180	120	70
ED-21 L	190	110	99	M8	180	87	280	200	150	75

Type	ED-21S			ED-21M				ED-21L			
Hopper	0,2 litre	0,7 litre	1,6 litre	3,1 litre	5,4 litre	8,5 litre	10 litre	16 litre	20 litre	25 litre	32 litre
D1	87	128	170	212	252	290	281	319	330	370	370
H2	52	68	94	115	138	151	151	183	196	210	240
H3	68	88	116	144	169	191	223	275	325	310	380
L3	55	75	96	120	140	160	150	175	180	200	200